

MEGATRENDS & TRANSFORMATIONAL LEADERSHIP

AHMP Cyber Chapter
Meeting/PDS
February 28, 2022

OBJECTIVES

- Why the video?
- 5 Megatrends and their importance to the HSE Profession
- Characteristics/behaviors as it relates to creating an HSE leadership culture
- Key takeaways for success

THOUGHT PROVOKING

- **Dominic Barton: 21st Century Leadership**
 - Managing Director of McKinsey from 2009-2018
 - World renown author, philosopher, and business strategist/leader

- Author of:



Talent Wins: The New Play...
2018



Dangerous Markets: Managin...
2002



China Vignettes: An Inside...
2007



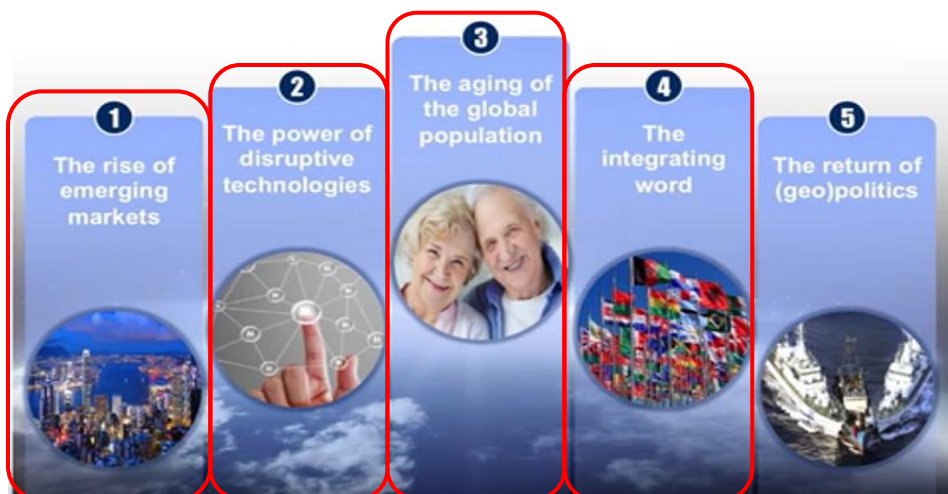
Banking in Asia: The End of En...
1999

- <https://youtu.be/64aYC0k57xU>
 - Why this video?
 - Relevant to YOU, as a leader & professional
 - International theme
 - Provokes self-reflection/inflection

3

THE FIVE MEGATRENDS

Five forces are changing the world at an unprecedented pace and scale



4

RISE OF EMERGING MARKETS

- Question: Name one emerging market/geography in which we are starting to see increased HSE concerns and name the concern:
 - China – Pneumoconiosis, mainly from silica and other particulate related exposures
 - <https://academic.oup.com/occmed/article/67/2/87/3002391>
 - <https://www.ncbi.nlm.nih.gov/pmc/articles/PMC2921040/>
 - Thailand – Cancer
 - <https://www.bangkokpost.com/business/1777564/cancer-in-the-thailand-workplace>
 - UK – Cancer & Mesothelioma
 - <https://www.hse.gov.uk/statistics/causdis/cancer.pdf>

5

DISRUPTIVE TECHNOLOGIES

- Question: Name a technological advancement that has either helped or hindered the field of HSE **in the past 10 yrs.**
 - PM Detectors/analyzers
 - <https://www.ncbi.nlm.nih.gov/pmc/articles/PMC6164905/>
 - <https://www.ncbi.nlm.nih.gov/pubmed/27333205>
 - Cell phones & cell phone SLM... hmmm
 - <https://www.ncbi.nlm.nih.gov/pmc/articles/PMC4350886/>
 - <https://www.southuniversity.edu/news-and-blogs/2016/08/health-risks-of-using-mobile-phones-137310>
 - Artificial intelligence... how will it affect IH data and modeling?

6

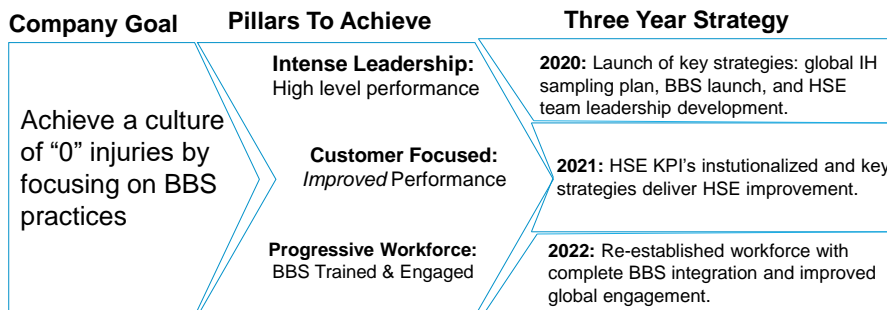
THE AGING GLOBAL POPULATION

- Question: What HSE challenges are present with the aging workforce?
 - Physiological changes
 - Repetitive motion concerns
 - Sensitivity to lower levels of noise, aromatic compounds, etc.
 - <https://osha.europa.eu/sk/publications/ageing-workforce-implications-occupational-safety-and-health-research-review-executive>
 - <https://www.cdc.gov/niosh/topics/productiveaging/safetyandhealth.htm>
 - https://www.ccohs.ca/oshanswers/psychosocial/aging_workers.html
 - <https://ohsonline.com/Articles/2019/10/04/Optimizing-Safety-For-Older-Workers.aspx?Page=2>

7

THE INTEGRATING WORLD

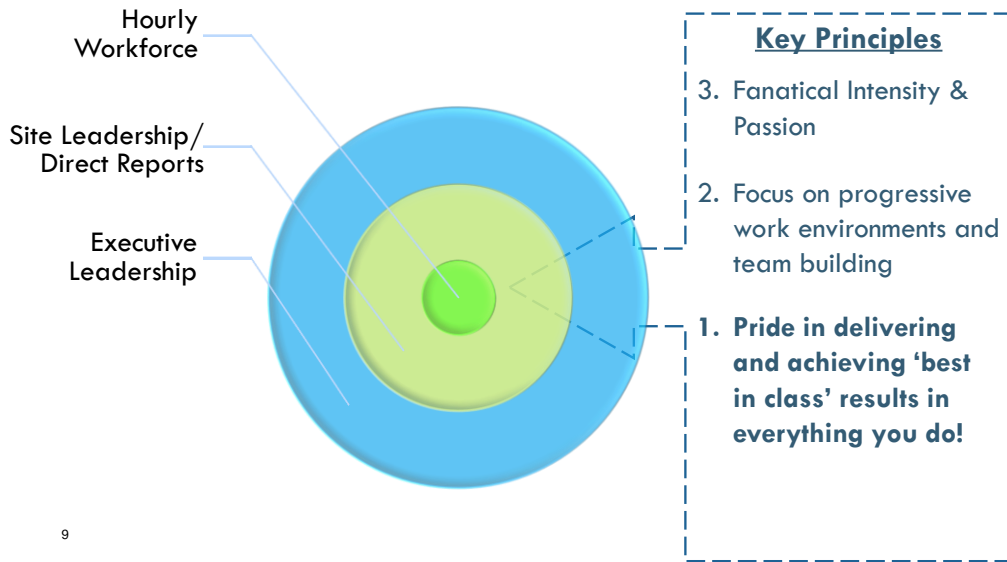
Question: Give an example of what an HSE management system 'looks like' in an integrated world.



Aligned With The Organizational Focus Of:

1. 0 HSE Incidents
2. 'Best in class' BBS performance
3. Occupational exposures eliminated or contained below applicable exposure limits

HOW TO CREATE AN HSE EXCELLENCE CULTURE?



9

CHARACTERISTICS TO CREATE HSE LEADERSHIP CULTURES

Character, behaviors, and tactics of 21st century leaders

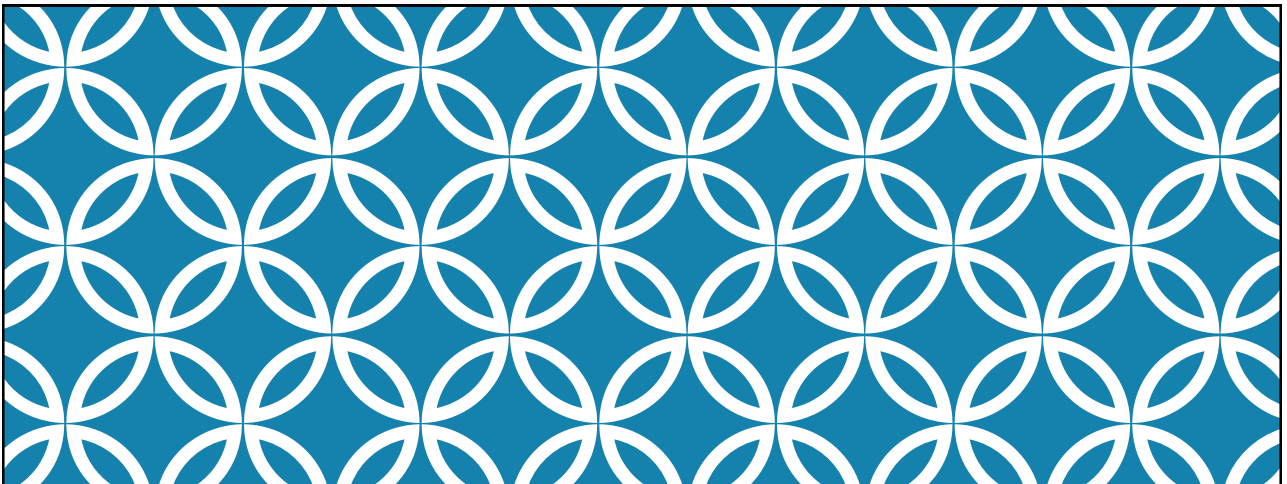


10

CONCLUSION: 5 LEADERSHIP CHARACTERISTICS

1. “Set Bold Ambition”
 - Be strategic and futuristic in your thought processes!
2. “Influence without Authority”
 - You have a responsibility to engage the organization to achieve positive results!
 - “Influence without Authority” by Allan Cohen & David Bradford
3. “Purpose & Resilience”
 - How do you ‘work with purpose’ and ‘get up when you fall down?’
4. “Selfless & Broadminded”
 - Our profession *requires* selflessness and compassion... use it!
5. “Judgement & Decisiveness”
 - Don’t let analysis paralysis blind your leadership abilities

11



THANK YOU!
&
QUESTIONS?